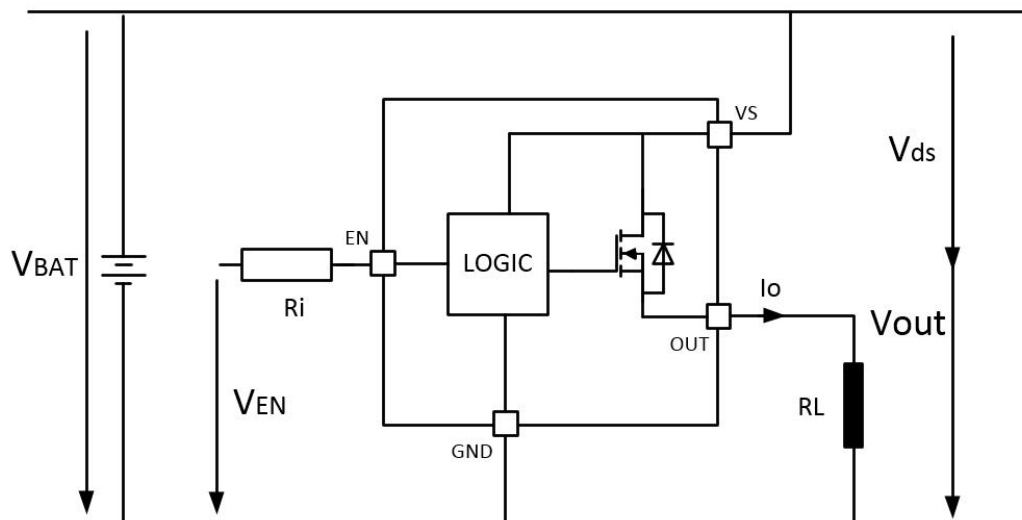


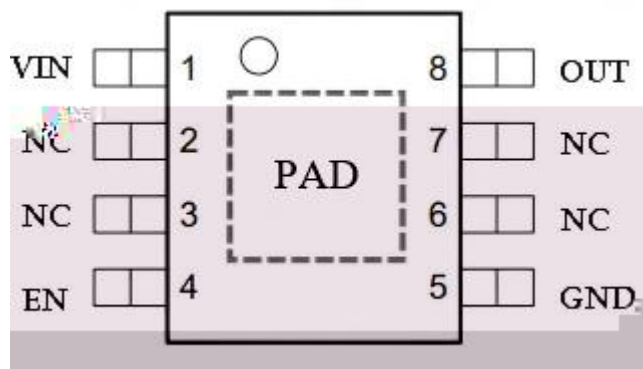
MCS4250H

MCS4250H 400mA
800mA MCS4250H EMC

- 4V~42V
- 10uA
- ESD
- 0.8A
- AEC-Q100
- RoHs



1 MCS4250H



2

1

VIN	1	IC
NC	2,3	
EN	4	
GND	5	
NC	6,7	
OUT	8	IC
PAD		GND

[1]

V_{IN}	-0.3V~42V
V_{EN}	-0.3V~42V
V_{OUT}	-0.3V~42V

[2]

J_A	20~40 /W
.....	-40 ~150
.....	-40 ~150

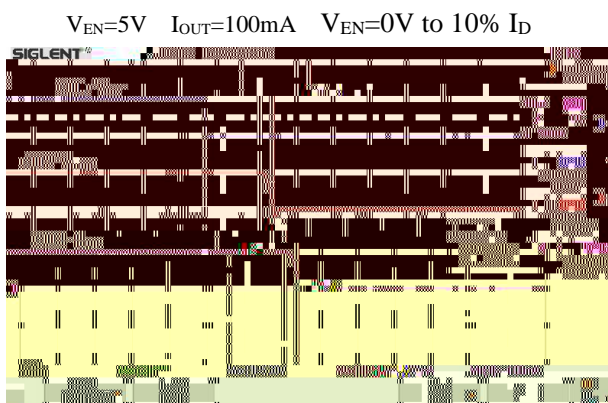
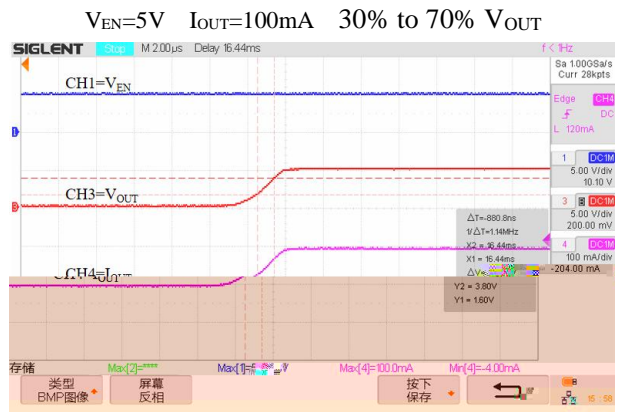
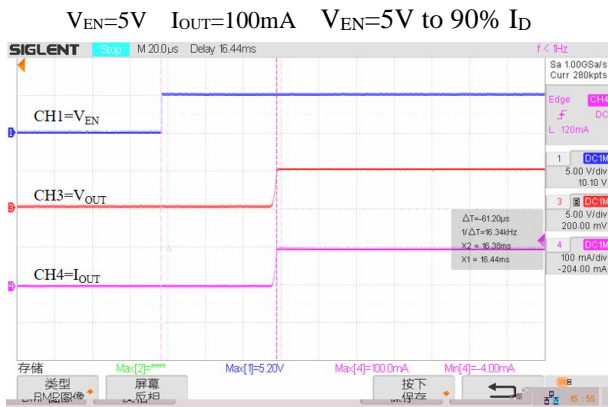
ESD^[3]

V_{ESD_HBM}	-2000V~+2000V
V_{ESD_CDM}	-300V~+300V

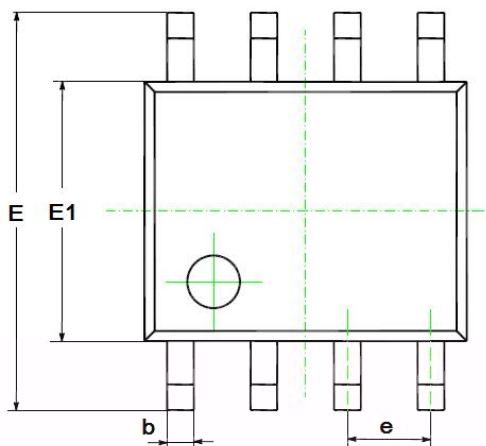
$V_{IN} = 13.5V$ $T_A = 25$

V_{IN}		4	13.5	42	V
I_{out}		400	800		mA
I_{SD}	$EN = 0V$		10		uA
I_{q1}	$I_O = 0mA$		800	1000	uA
I_{q2}	$I_O = 5mA$		820	1000	uA
I_{q3}	$I_O = 400mA$		1	1.5	mA
V_{dr}	$I_O = 300mA$		0.3		

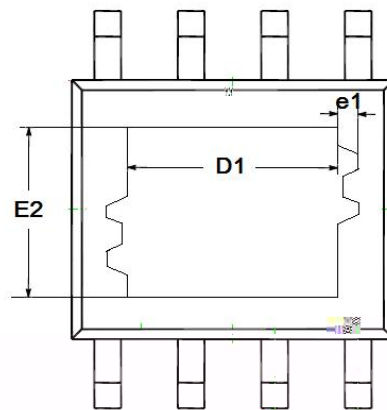
$T_A=25$



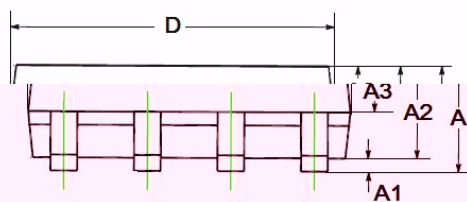
V



顶视图

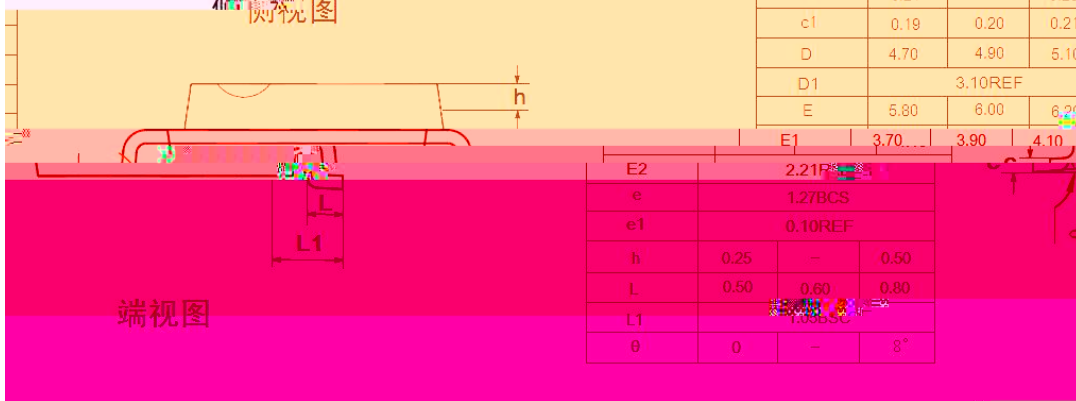


底视图



侧视图

符号	毫米		
	最小值	典型值	最大值
A	-	-	1.65
A1	0.05	-	0.15
A2	1.30	1.40	1.50
A3	0.60	0.65	0.70
b	0.39	-	0.48
b1	0.38	0.41	0.43



端视图

c1	0.19	0.20	0.21
D	4.70	4.90	5.10
D1	3.10REF		
E	5.80	6.00	6.20
E1	3.70	3.90	4.10
E2	2.21REF		
e	1.27BCS		
e1	0.10REF		
h	0.25	-	0.50
L	0.50	0.60	0.80
L1			
θ	0	-	8°

ESOP8

MCS4250H	E20P8	4000pcs/Type & Reel